

FIBERFLO™ "A" PLEATED CARTRIDGE FILTERS

POLYETHERSULFONE

The FiberFlo "A" Polyethersulfone cartridges are absolutely rated cartridge filters. Made of polyethersulfone membrane, the filters have an increased surface area with excellent flow rates per 10 inch lengths. Their compatibility with a broad range of chemicals and physiological inertness makes them suitable for the filtration of sera, diagnostic reagents, biological fluids, acids, bases, water and solvents.

Dependable Performance

FiberFlo "A" cartridges consist of a polyethersulfone membrane with thermally bonded polypropylene components to provide a very durable filter with only two materials of construction.

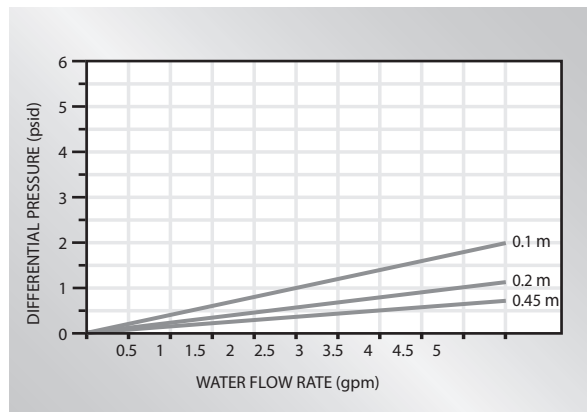
The unique hydrophilic polyethersulfone membrane contains no surfactants or surface wetting agents. Manufactured under QSR, the filters are 100% integrity tested in manufacturing to ensure consistent and reliable performance.

Absolute ratings for FiberFlo "A" cartridges can be verified in the field by integrity testing using bubble point or diffusional flow testing.

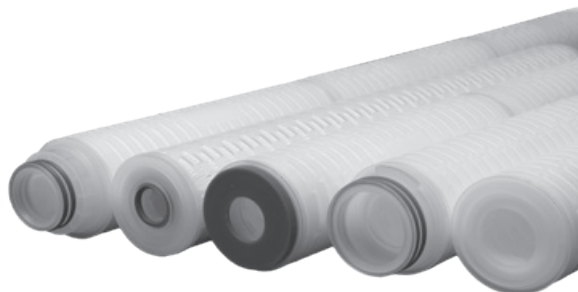
All FiberFlo "A" cartridges pass USP class VI plastic tests as well as tests for cytotoxicity, hemolysis and pyrogenicity.

Applications

- Final filtration for bacteria removal in reverse osmosis, deionization and other high purity water systems.
- Beverage and wine filtration/clarification
- Photographic solutions
- Plating solutions
- Magnetic coatings



TYPICAL WATER FLOW RATE per 10-inch (25 cm) FiberFlo "A" cartridge



Specifications

Filter Media: Pleated Polyethersulfone Membrane
 Membrane Support, Core Tube, Sleeve, End Caps: Polypropylene
 Sealing Technology: Thermal Bonding
 Endotoxins: Less than 0.5 EU/ml
 Biosafety: All components meet or exceed USP Class VI-121° plastic tests
 Oxidizable Substances: Filtrate meets or exceeds USP XXI requirements for purified water after 1 liter flush
 O-Ring: Silicone
 O-Ring Color: Red

Cartridge Dimensions

Nominal Length*	Filtration Area
10 inch	7.0 ft ² / 0.65 m ²
20 inch	14.0 ft ² / 1.3 m ²
30 inch	21.0 ft ² / 1.95 m ²
40 inch	28.0 ft ² / 2.6 m ²

Outside Diameter

2.75 in / 7 cm

*Actual overall length of cartridge will vary depending on configuration. Cartridge performance is as specified regardless of configuration.

Max. Differential Pressure:

Forward: 50 psi (3.4 bar) at 68°F (20°C)

Reverse: 40 psi (2.7 bar) at 68°F (20°C)

Max. Operating Pressure at inlet: 120 PSIG (7 bar)

Pore sizes

0.03, 0.1, 0.22, 0.45, 0.65, 0.80, 1.0 and 1.2 microns

End-Fitting Options

End Fitting Options:	
Description	Code
SOE-222 O-Ring/Flat Bottom	A
SOE-222 O-Ring/Fin	B
SOE-226 O-Ring/Fin	C
DOE-Flat Gasket/Flat Gasket	D
SOE-213 O-Ring Internal / Flat End	E